

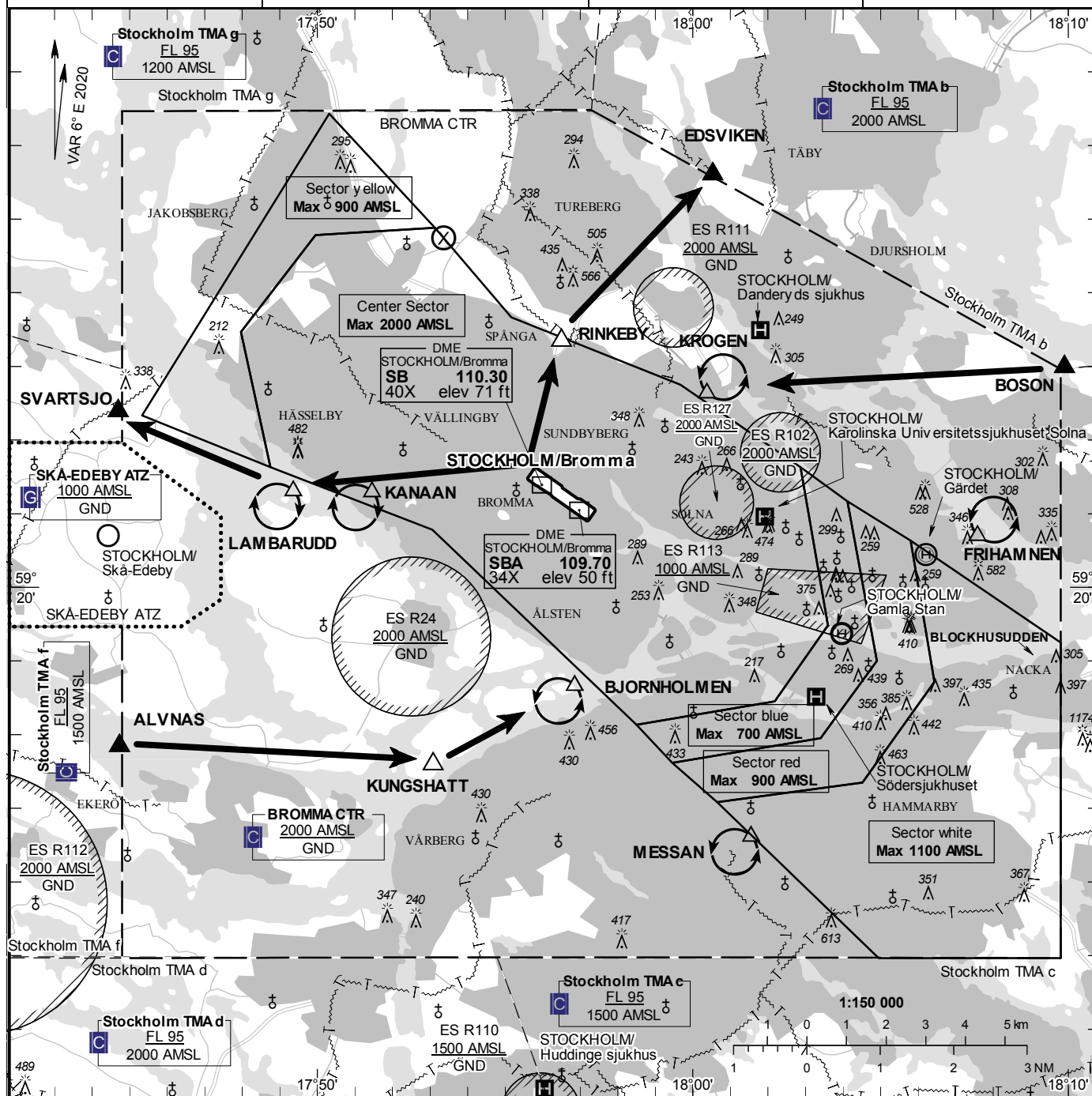
AD 2 ESSB 9-4  
RWY 30

STOCKHOLM/Bromma  
SWEDEN

BROMMA TOWER 118.105  
BROMMA GROUND 121.605  
BROMMA ATIS 122.455

AD ELEV 47 FEET  
ELEV and ALT in ft  
HGT in ft above AD ELEV

AIP SWEDEN  
VFR-FLIGHT WITHIN  
BROMMA CTR  
(ref AD 2 ESSB 2.22)



#### Communication failure

Aircraft outside CTR having received no clearance should land at an aerodrome outside CTR and obtain clearance by telephone for further flight to STOCKHOLM/Bromma.  
If no suitable aerodrome is within reach;  
1. SQUAWK 7600  
2. Depending on probable active RWY;  
For RWY 30 enter CTR via ALVNAS – Holding BJORNHOLMEN at or below 1500 ft AMSL to join traffic circuit on downwind leg.  
For RWY 12 enter CTR via SVARTSJO – Holding KANAAN at or below 1500 ft AMSL to join right traffic circuit on downwind leg.  
Transmit blind your intentions.  
3. Flash LDG-lights and watch TWR for optical signals.

#### Remark

Obstacles below 197 ft AGL not shown in CTR

#### Entry / exit point

EDSVIKEN	592536N 0180032E
BOSON	592259N 0180954E
ALVNAS	591750N 0174444E
SVARTSJO	592223N 0174442E

#### Reporting point

RINKEBY	592320N 0175630E
KUNGSHATT	591735N 0175305E

#### Legend

See GEN 2.3

Special procedures for balloon flight, see AD 2 ESSB 2.22.6.4

#### Holding

KROGEN:	Hold over intersection between roads E18 and E4, north east of point 592237N 0180023E
FRIHAMNEN:	Hold over the harbour Frihamnen, north east of point 592041N 0180735E
MESSAN:	Hold over the exhibition hall, south west of point 591636N 0180133E
BJORNHOLMEN:	Hold over Björnholmen, south west of point 591839N 0175651E
KANAAN:	Hold over the swimming area Kanaanbadet, south west of point 592117N 0175127E
LAMBARUDD:	Hold over Lambaruudd, south west of point 592118N 0174921E